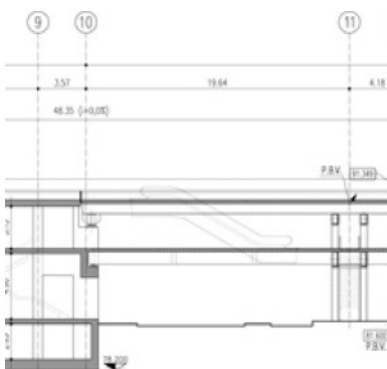
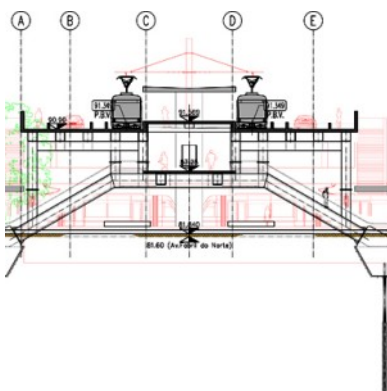


SÃO MAMEDE LINE

TECHNICAL ADVISORY FOR THE ELABORATION OF THE PRELIMINARY STUDY/ REFERENCE SOLUTIONS IN THE SPECIALTIES OF LAYOUT, TUNNELS, STATIONS (EXCAVATION, STRUCTURES AND ELECTROMECHANICS), GEOLOGY-GEOTECHNICS AND SPECIAL STRUCTURES.



Client: Metro do Porto, S.A. (Oporto Metro Company) Metro do Porto, S.A. – Project Division

Location: Metro Do Porto, Portugal

Design date: 2010 - 2011

Services: Technical advisory for the elaboration of the Preliminary Study/ Reference Solutions in the specialties of Layout, Tunnels, Stations (excavation, structures and electromechanics), Geology-geotechnics and Special Structures.

Summary:

Alternative Study of the São Mamede Line, with a total length of 6.7 km, mostly underground. It has 10 Stations, 6 of which underground: 4 built by the Cut-and-Cover method and 2 shafts and / or galleries.

[SEE ONLINE](#)